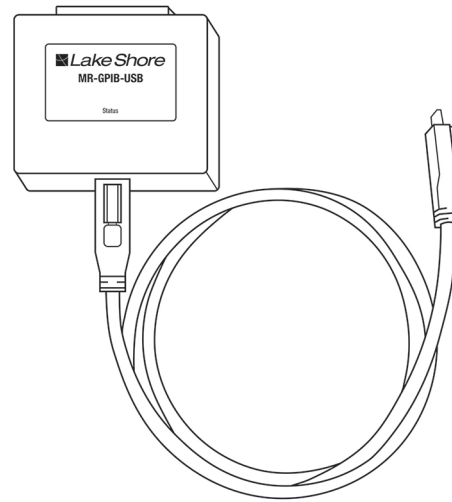


Quick Start Guide

Measure Ready™

GPIB Adapter



Safety Precautions

Observe these general safety precautions during all phases of adapter operation, service, and repair. Failure to comply with these precautions or with specific warnings elsewhere in this manual violates safety standards of design, manufacture, and intended use. Lake Shore Cryotronics, Inc. assumes no liability for Customer failure to comply with these requirements.

Do Not Operate in an Explosive Atmosphere

Do not operate this product in the presence of flammable gases or fumes. Operation of this product in such an environment constitutes a definite safety hazard.

Keep Away from Live Circuits

Operating personnel must not remove adapter covers. Refer component replacement and internal adjustments to qualified maintenance personnel. Do not replace components with power cable connected. To avoid injuries, always disconnect power and discharge circuits before touching them. Do not position the adapter so that it is difficult to disconnect the power cord.

Do Not Substitute Parts or Modify Instrument

Do not install substitute parts or perform any unauthorized modification to the adapter. Return the adapter to an authorized Lake Shore Cryotronics, Inc. representative for service and repair to ensure that safety features are maintained. If the equipment is used in a manner not specified by the manufacturer, the protection provided by the equipment may be impaired.

Cleaning

Do not submerge the adapter. Clean only with a damp cloth and mild detergent. Exterior only.

Improper Use

If the adapter is used in a manner that is not specified by Lake Shore, the safety protections provided by the adapter are no longer guaranteed, and may be impaired.

Child Safety

This equipment is not suitable for use in locations where children are likely to be present.

Introduction

The GPIB adapter is available for use with MeasureReady™ instruments, which provides GPIB communication to instruments that don't have built-in GPIB.

Features

- Easily connects to MeasureReady™ instruments via the USB Type-C™ connector
- Configurable through screen input
- Includes an LED status indicator
- 2-year standard warranty

Unpacking

1. Inspect all items for both visible and hidden damage that occurred during shipment. If there is visible damage to the contents, contact the shipping company and Lake Shore immediately.
NOTE: Procedures vary with shipping companies. Keep all damaged shipping materials and contents until instructed to either return or discard them.
2. Keep the container and shipping materials until all contents have been accounted for.
3. Check off each item on the packing list as it is unpacked.

Connection

The GPIB adapter includes a USB Type-C™ connector with locking screws that allow the cable to be secured to both the adapter and the MeasureReady™ instrument.



CAUTION: This device is not intended to be connected to a personal computer. It should only be connected to MeasureReady™ instruments via the USB Type-C™ connector on the rear panel.



LED indicator

The adapter includes a status indicator to determine its current state:

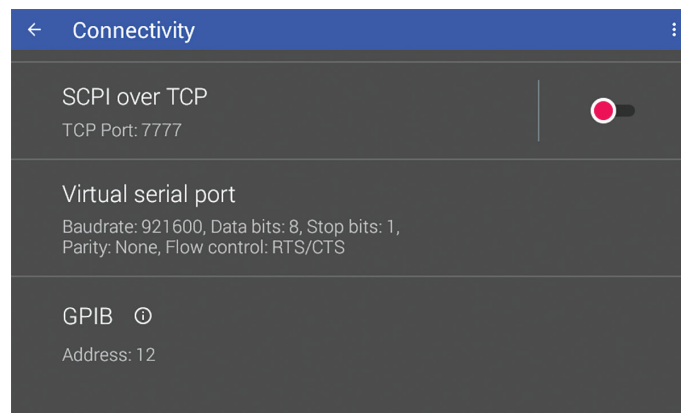
1. **Solid LED:** power has been applied and initialization is complete with the host instrument.
2. **Continuous slow blink:** the adapter has not been initialized by the host instrument. If this persists after the instrument is fully powered up and ready for operation, this likely means that the instrument needs a firmware upgrade to work properly.
3. **Short, fast bursts:** data is being exchanged between the instrument and the GPIB.




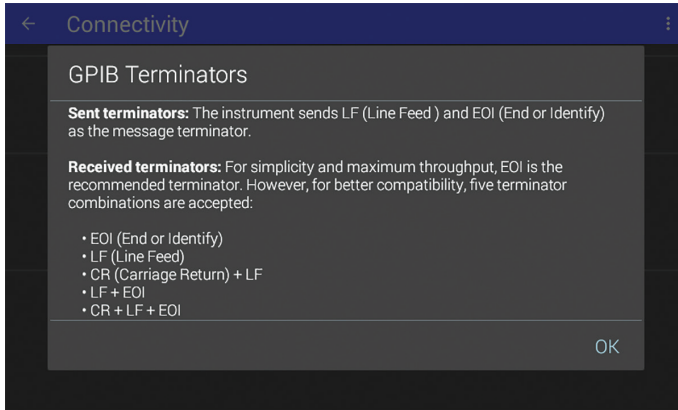
Configuring the adapter

The System settings menu of the MeasureReady™ instrument is provided to view and set/reset general instrument settings. To find these settings:

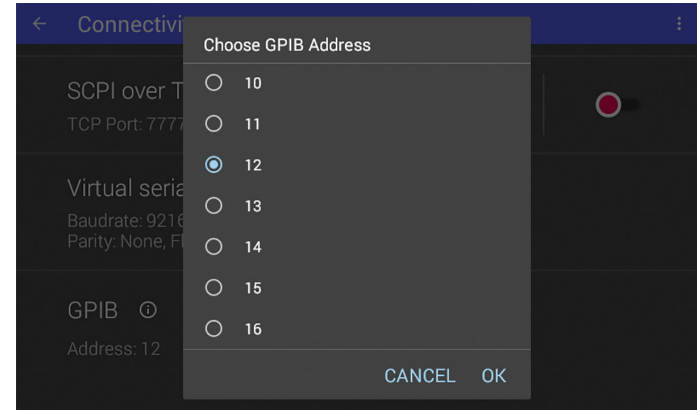
1. Tap the Settings menu (top left corner of the screen) to go to the navigation drawer.
2. Tap System settings.
3. Tap Connectivity.



 Within the GPIB setting, tap the information icon to see information about terminators, as shown in the image below.



Tap anywhere else on the GPIB setting to change the address. Acceptable address values range from 0 to 30.



GPIB modes

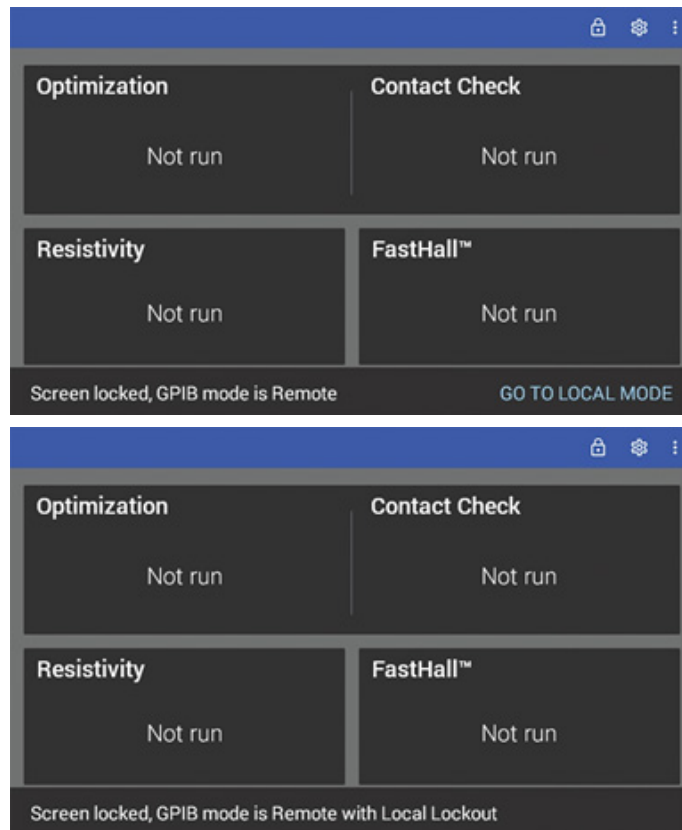
When paired with the adapter, the MeasureReady™ instrument will support the following GPIB modes:

Local: the GPIB host controller is not controlling the instrument remotely. The front panel can be used to control the instrument.

Remote: the GPIB host controller is actively controlling the instrument. To return to Local mode, click **Go to Local mode**.

NOTE: The SCPI command: **SYSTem:LOCa1** can also be used to go to local mode.

Remote with Local Lockout: the GPIB host controller is actively controlling the instrument, but the option to go to local mode is locked.



Contacting Lake Shore

The Lake Shore Service Department is staffed Monday through Friday between the hours of 8:00 a.m. and 5:00 p.m. EST, excluding holidays and company shut down days.

Contact Lake Shore Service through any of the mean listed below. However, the most direct and efficient way is to complete the online serviced request form at: <https://www.lakeshore.com/service/>.

The Lake Shore Forum is also a great place to look for solutions, to post issues, and to share successes: <https://forums.lakeshore.com/>.

For further documentation and information, please see: <https://www.lakeshore.com/products/MeasureReady/Pages/MeasureReady-models.aspx>.

Lake Shore Service

Lake Shore Cryotronics
Instrument Service Department
575 McCorkle Blvd.
Westerville, Ohio USA 43082-8888
Phone: 614-891-2244
Email: service@lakeshore.com
Web: www.lakeshore.com